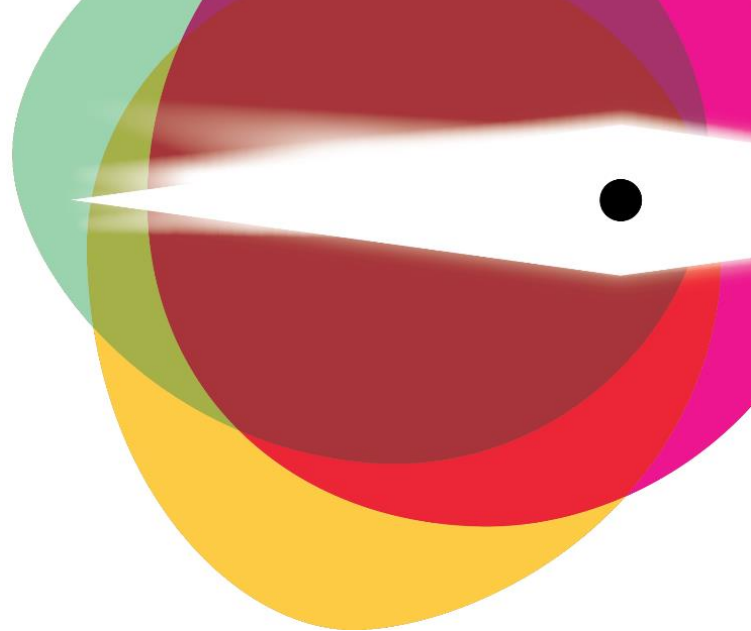
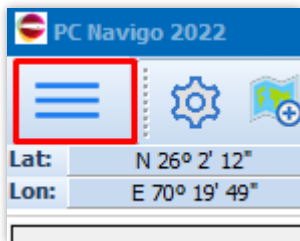


PC-Navigo 2022

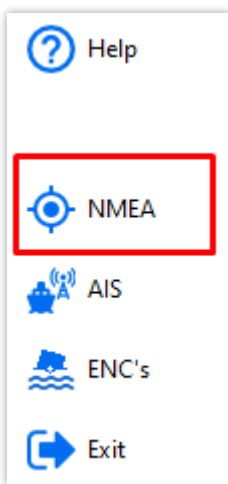
Configure GPS/AIS



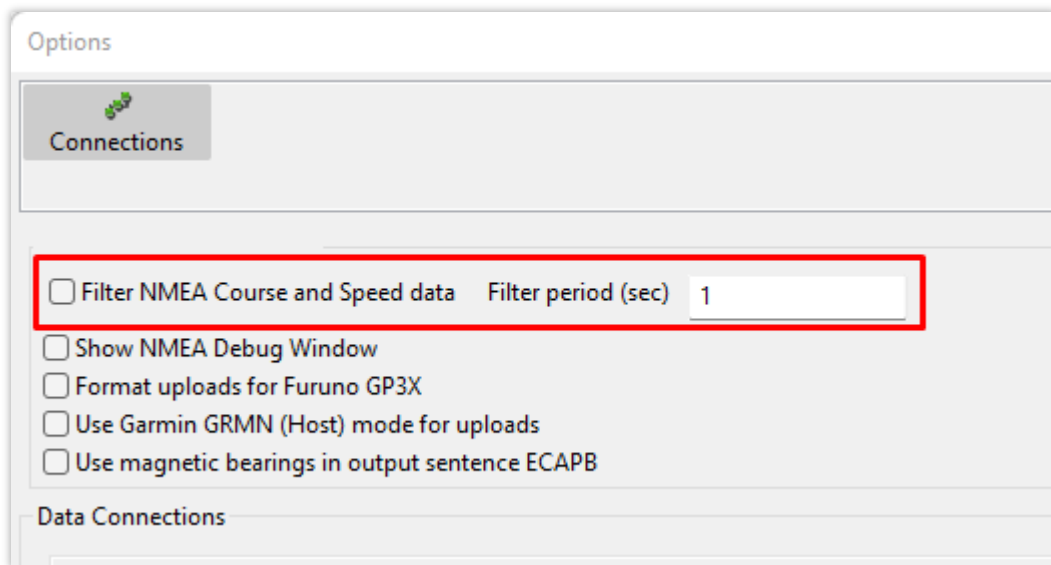
1. Open the main Menu



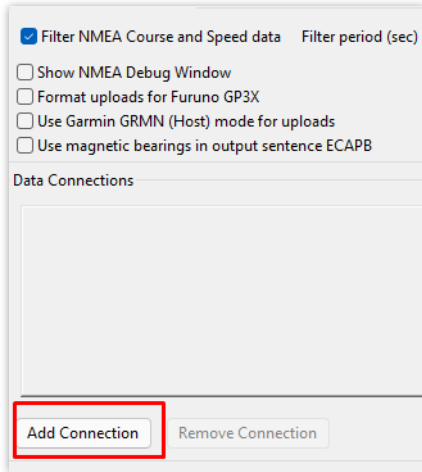
2. Click on NMEA



3. The NMEA Options screen opens. Please Enable the option 'Filter NMEA Course and Speed data'



4. Then click on 'Add Connection'



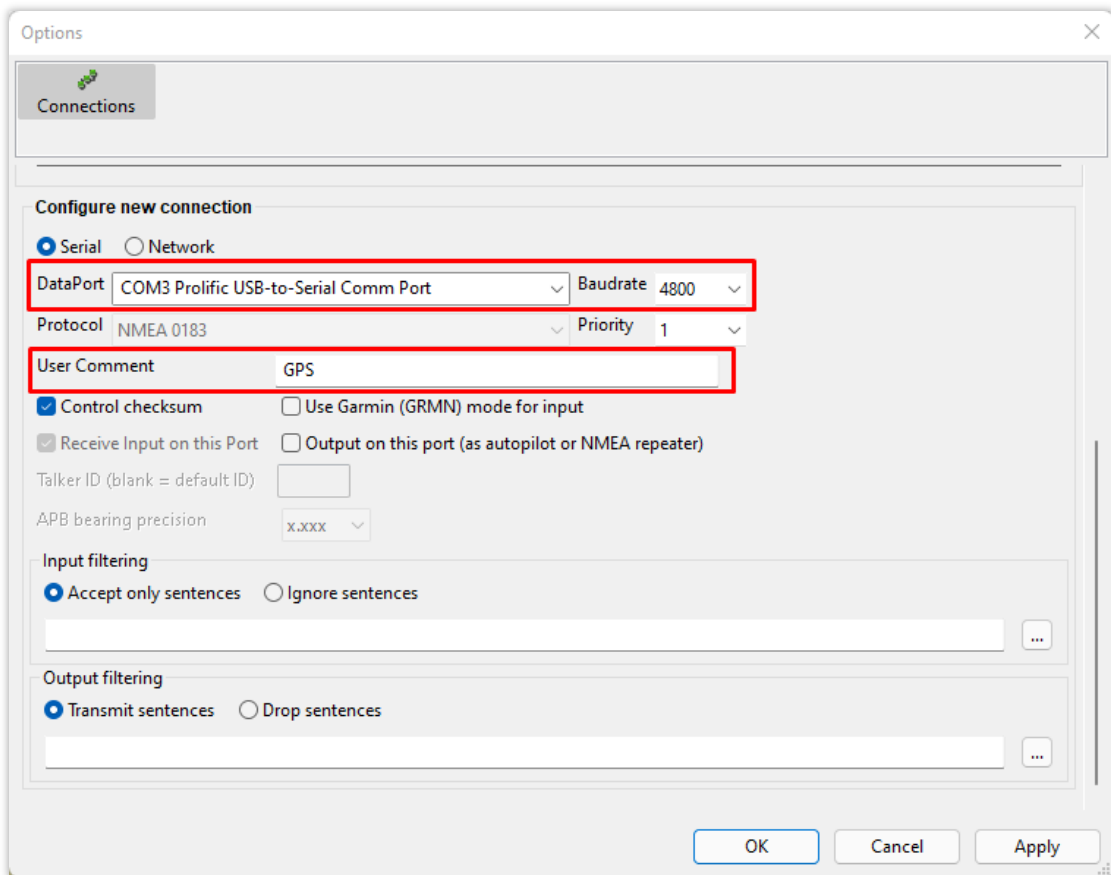
5. The following screen appears. You must fill in/select the following data:

DataPort: The COM port of your GPS or AIS device.

Baudrate: Select here the correct Baudrate. GPS is normally 4800, AIS is normally 38400.

User Comment: We recommend to fill in which device is connected to this port. This way you can easily recognize which device is connected to which port.

Optioneel: Enable the option 'Output on this port' when you use an AIS. This allows PC-Navigo to send data back to the AIS.



6. Click Apply to save the information
7. If you have more than 1 device connected to PC-Navigo, please follow steps 4-6 again to add another connection
8. Click OK to save the settings and close the NMEA screen.